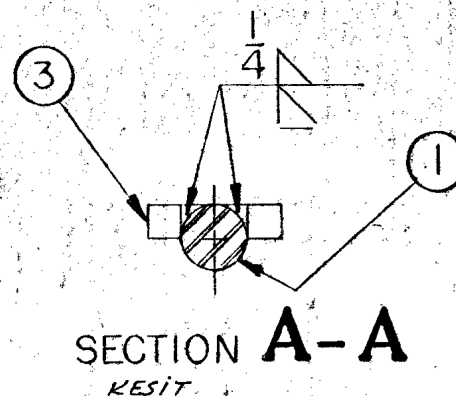


TOLERANCES ON ALL DIMENSIONS NOT SPECIFIED ON THE DRAWING TO BE IN ACCORDANCE WITH A.I. 2100.

**BREAK ALL SHARP CORNERS
UNLESS OTHERWISE SPECIFIED.**

COUNTERSINK ALL TAPPED HOLES 118° & ONE THRD DEEP.

SURFACE FINISH SPECS. IS IN ACCORDANCE WITH G.M. ENGR. STDS.



Kaynağın üstünden 45° taşıyınız.

GRIND 45° FROM
UPPER TOE OF WELD

1	Ayok		FOOT	8309325	3
1	OPPOSITE MS 436 STEEL		ROD - HANDRAN		2
1	Tutamak		HANDRAIL	8478895	1
NO. REQUIRED PER ASSEMBLY	MATERIAL		NAME OF PART	PART NO.	IT NO.
	ELECTRO-MOTIVE DIVISION				
	GENERAL MOTORS CORPORATION LA GRANGE, ILLINOIS, U.S.A.				
DR.	R. Ewers	DATE	8-3-66		
CR.	F. C. Buckner	DATE	8-4-66		
MR.	R. K. Morrison	DATE	8-6-66		
NO.	MOD. ENG.		TUTAMAK KOMPLE		
NO.	P.O. RRP		HANDRAIL ASM		
DATE	ENG.		DATE OF PRINT	PART NO.	
8-1-66	B.K.K. 8-8-66			8385348	

YAR NO	SIRA NO
69	1308

8478895

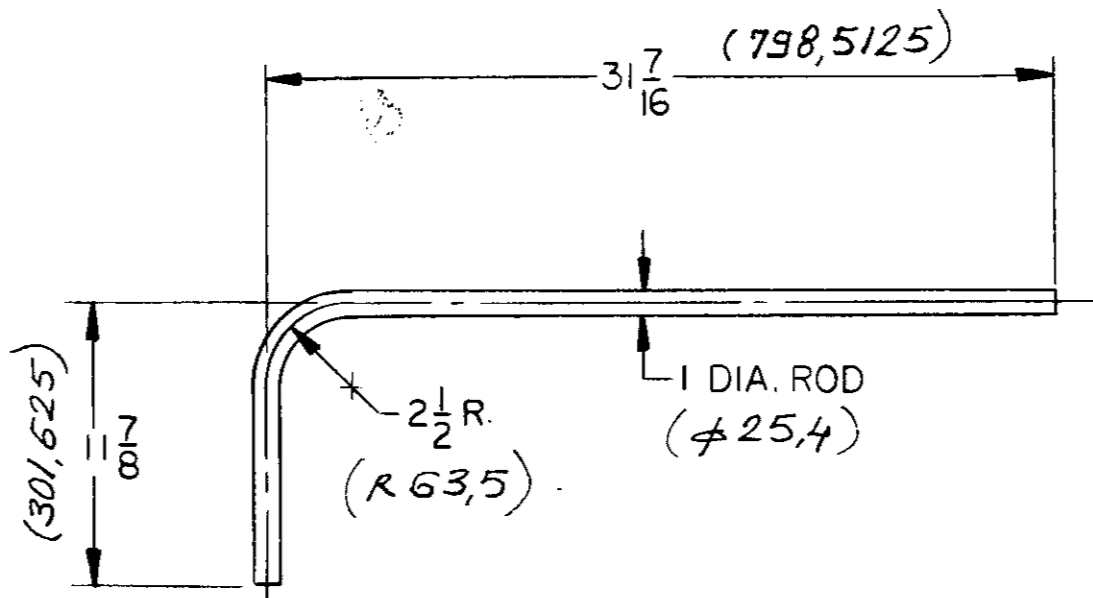
TOLERANCES ON ALL DIMENSIONS NOT SPECIFIED ON THE DRAWING TO BE IN ACCORDANCE WITH A.I.-2100.

BREAK ALL SHARP CORNERS UNLESS OTHERWISE SPECIFIED.

COUNTERSINK ALL TAPPED HOLES 118° X ONE THR'D DEEP.

SURFACE FINISH SPECS. IS IN ACCORDANCE WITH G.M. ENG.R STDs.

1704 103



										MATERIAL		NAME OF PART		PART NO.		IT. NO.	
										SAE 1020 ST'L							
										DR. <i>J. Smay</i>		DATE 6-22-72					
										CHK. <i>G.D. Pater</i>		DATE 6-27-72					
										SUB. <i>W.K.</i>		CH. DR. <i>Shind</i>		DATE 6-28-72			
										WELD.		MOD. ENGR. <i>RKP</i>		DATE 7/1/72			
										MAT'L. <i>SN</i>		ENGR. <i>RKP</i>		DATE 7/1/72			
R. F. C. NO.		REV. LET.		REVISION		DATE		BY		CK.		APV'D.		DATE OF PRINT		PART NO.	
														1		8478895	
FIRST USED ON		G1-22C															

ELECTRO-MOTIVE DIVISION
GENERAL MOTORS CORPORATION
LA GRANGE, ILLINOIS, U.S.A.

(TUTAMAK) HANDRAIL

8309325

PERMISSIBLE VARIATION ON COMMON
FRACTION DIMENSIONS TO MACHINED SURFACES
TO BE ± 0.10 UNLESS OTHERWISE SPECIFIED.
FABRICATION TOLERANCE.

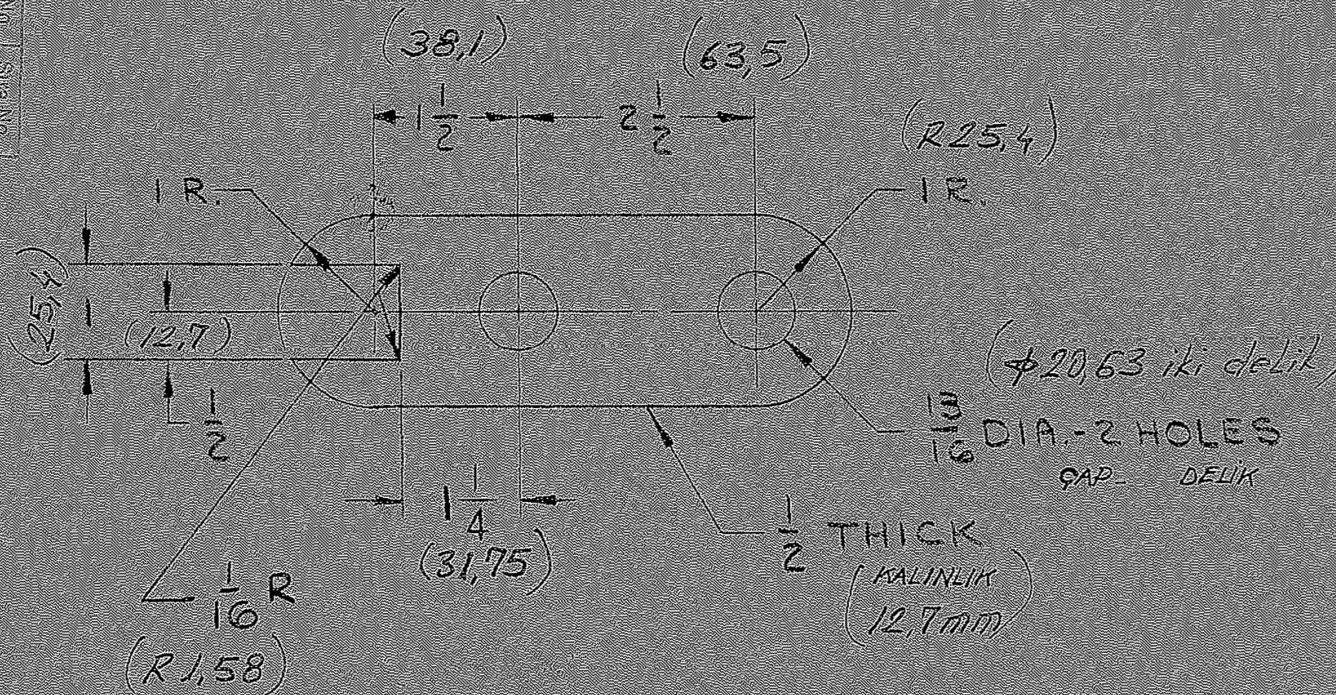
BREAK ALL SHARP
CORNERS UNLESS
OTHERWISE SPECIFIED.

COUNTERSINK ALL TAPPED
HOLES 118° X ONE THR'D DEEP.

SURFACE FINISH SPECS.
IS IN ACCORDANCE
WITH G.M. ENGR. STDS.

 $\pm \frac{1}{32}$

1701 / 105
Sht. No. /



				MATERIAL				NAME OF PART		PART NO.	IT NO.
				MS 4361 STEEL				ELECTRO-MOTIVE DIVISION			
				DR. Cassiman 7-6-61				GENERAL MOTORS CORPORATION			
				CK. R.E. Mack 7-15-61				LA GRANGE, ILLINOIS, U.S.A.			
				CH. CK. SUP. 7-17-61				FOOT AY44			
				WELD. CH. DR. 7-17-61				DATE OF PRINT			
				ENGR.				PART NO.			
								8309325			
FIRST USED ON EX 11266-64-10-14											